

**Unique property on the
Highway in the entry of
Nicosia - Cyprus**







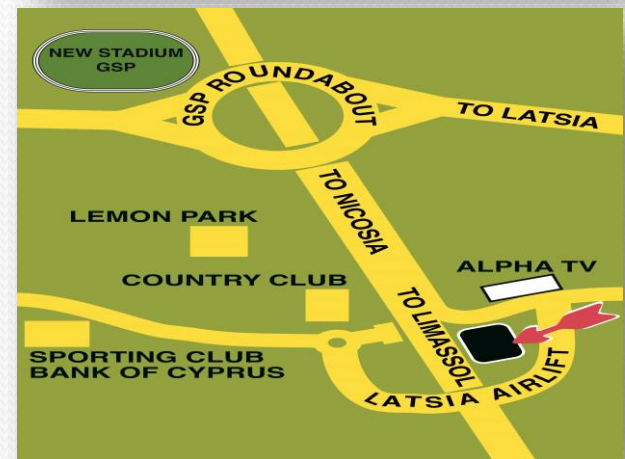
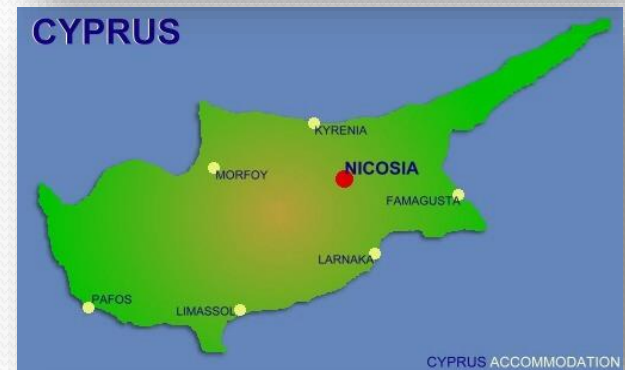






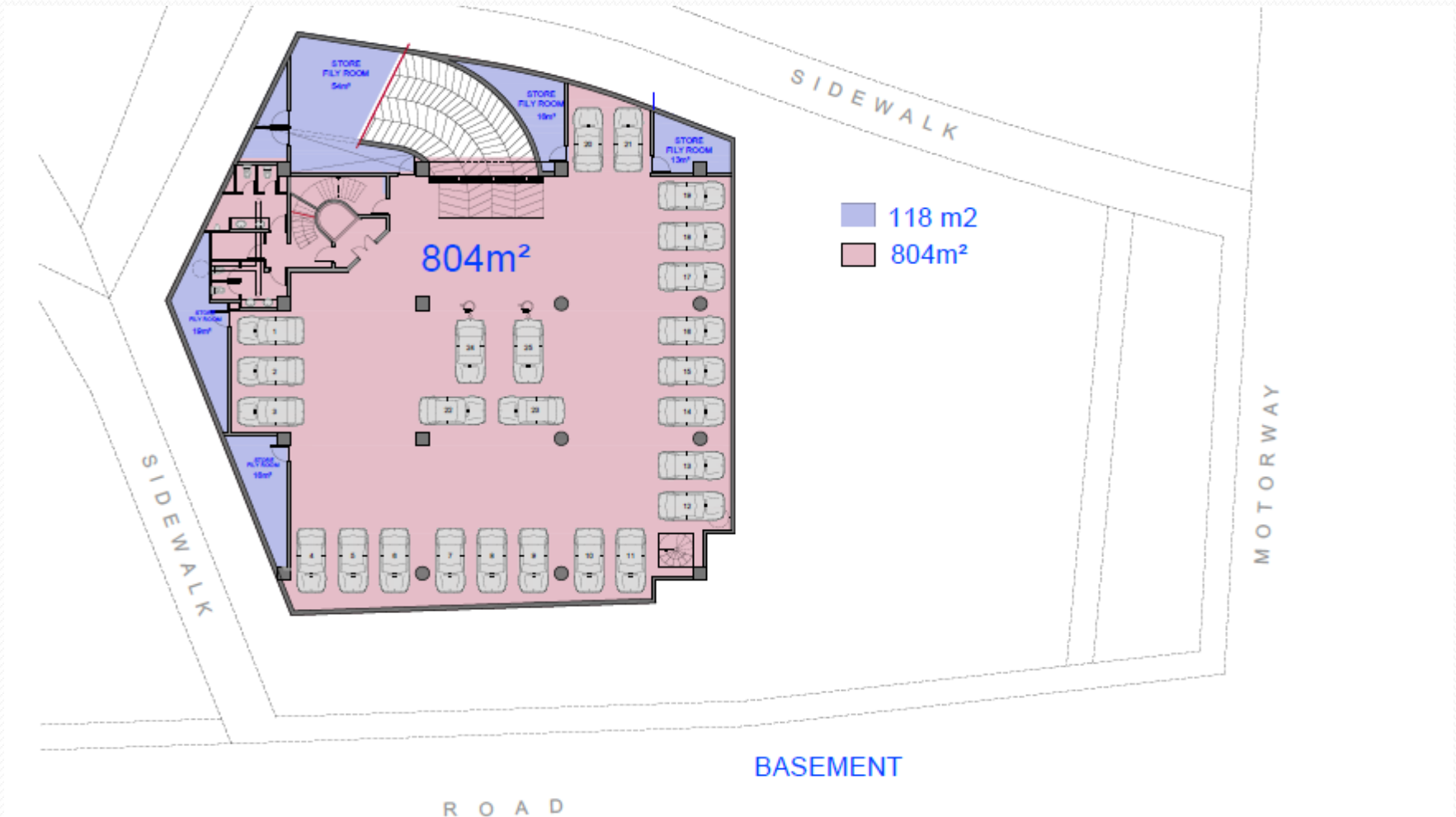
For sale commercial building for offices - showroom 2,008m² with 52 parking places on the Highway, at the entry of Nicosia

- Prime location on the Highway in the entry of Nicosia - Latsia
- According to formal measuring 25,000,000 cars passing by this place every year (it is a road of higher traffic movements)
- It is unique because it is surrounded by roads
- Easy access to and from the Nicosia and Highway
- The property is ideal for offices - showroom with capacity for parking more than 52 cars in basement and ground floor

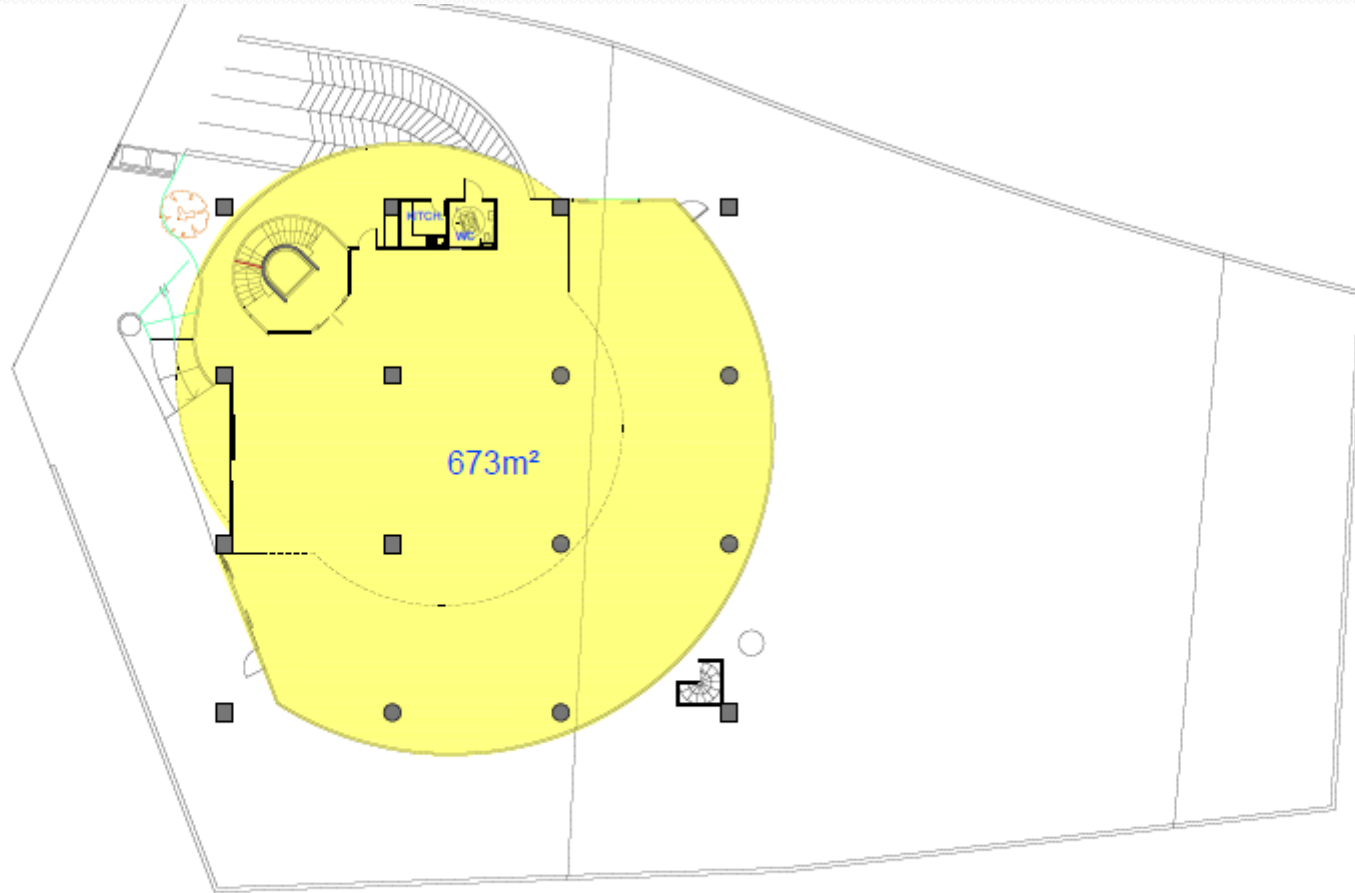


Basement

Total 52 parking's including ground floor

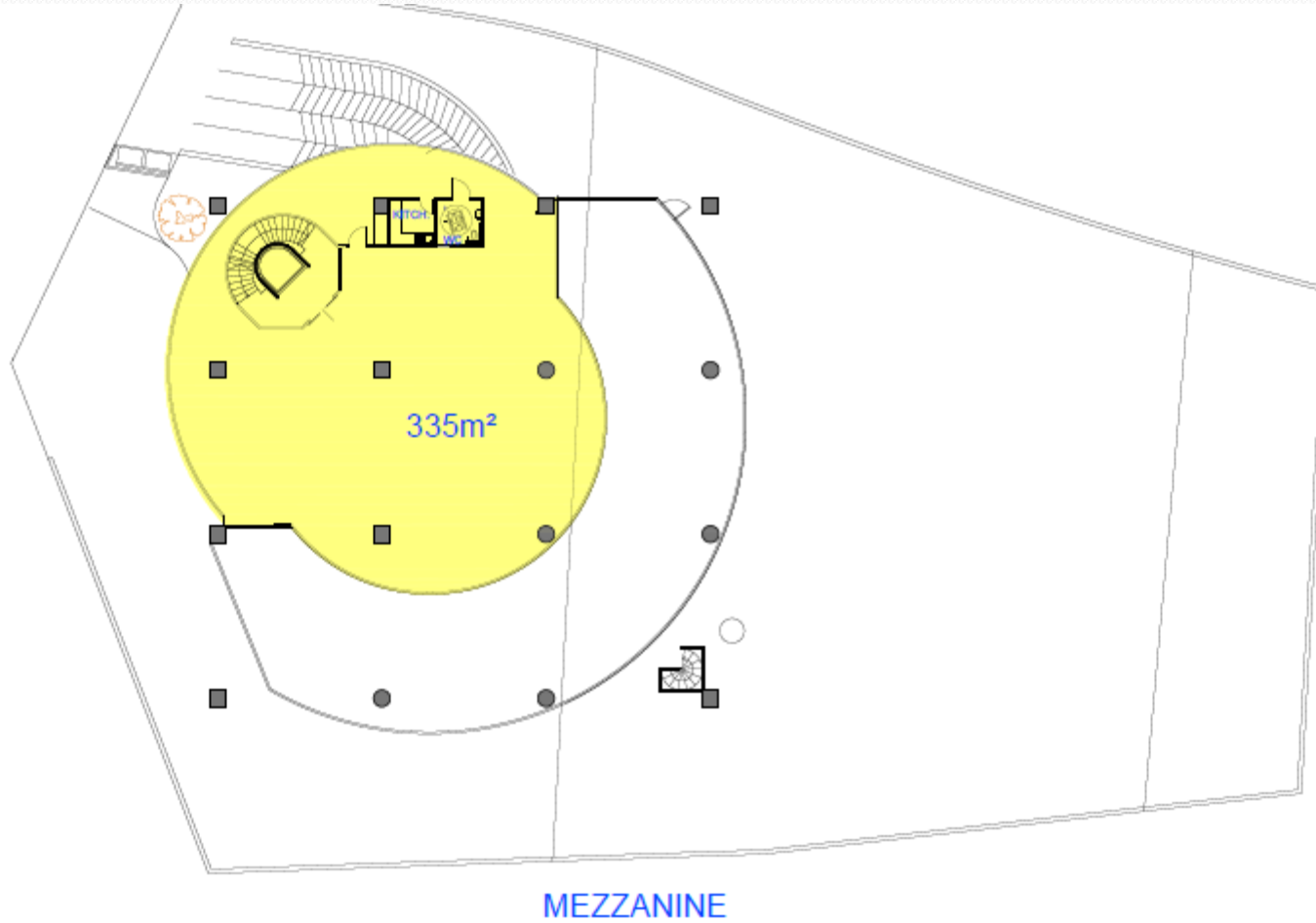


The Offices / Showroom 673m²

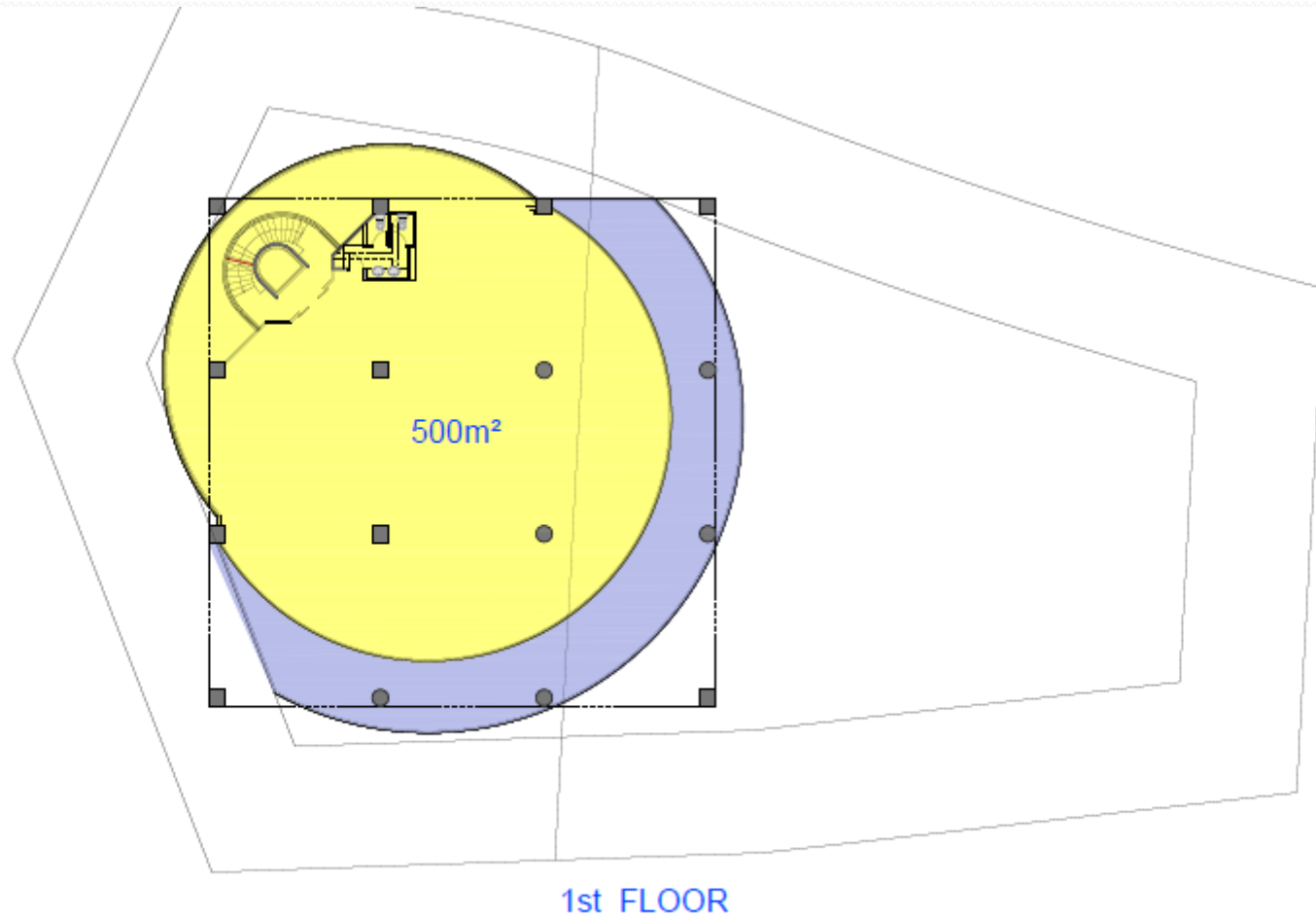


GROUND FLOOR
OFFICE - SHOWROOM

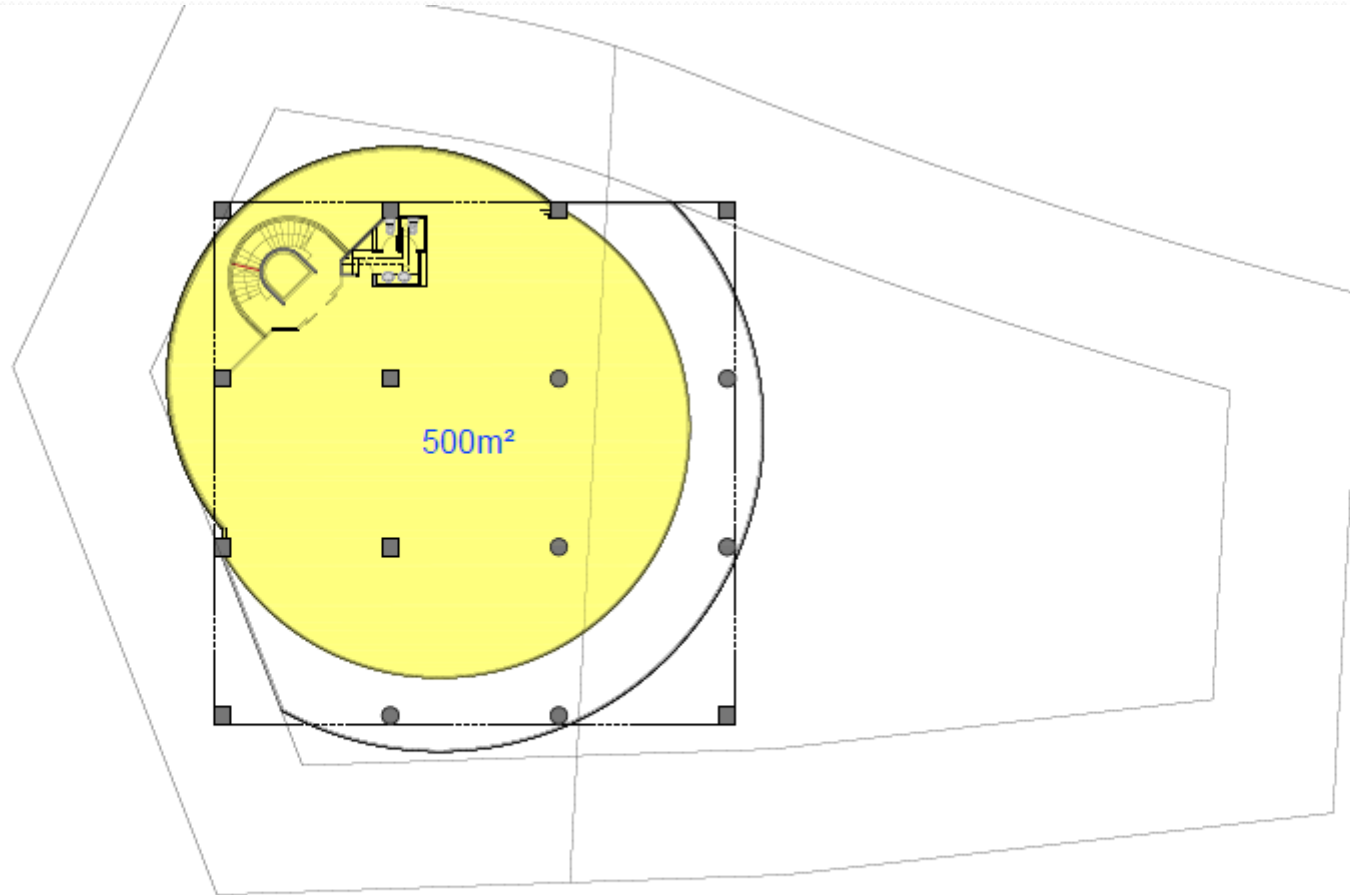
Mezzanine 335m²



First Floor 500m²



Second Floor 500m²



2nd FLOOR

Roof

